

ambre

400



## The Allier User Guide

# CONTENTS

Manual Tilt-in Space  
Articulating back  
Arm Removal

Seat Width Adjustment/ Arm-rest removal  
Thoracic Width, Angle and Height Adjustment  
Removable Seat Cushion Module

Leg rest Operation  
Leg rest Starting Position  
Footplate Height Adjustment and Removal

Footplate Angle Adjustment  
Footplate Fold Away  
Rear Castor Braking

---



## OUR MISSION

To provide tailored Postural Support and Pressure Care 24/7

Showering, Bathing and Toileting equipment which continues to provide the best positioning and pressure care, making this part of the User's daily routine more enjoyable.

Sleep Systems and Postural Management, Beds & Mattresses to support better posture and comfort during the night season, with cushions providing a 24hr pressure care package.

Moving and Handling using the correct equipment with both comfort and dignity in mind resulting in benefit to both User and Caregiver alike.

Seating and Comfort Modular Wheelchairs with targeted postural support and high-risk pressure relief to ensure absolute comfort throughout the day.

---

## GET IN TOUCH

01522 420091  
enquiries@ambrestone.co.uk  
www.ambrestone.co.uk

# Welcome

Ambre-stone understand the “unknown quantity” that many users, parents, clinicians and care teams face when sourcing the right equipment for care of lesser abled persons.

The ambreX is a unique process providing individually tailored outcomes for both user and carer alike.

Our team will assist you through the following route to ensure you are provided the support you deserve.

---



## ASSESSMENT

Our internal team starts the ambreX journey by learning about the user, understanding medical history, previous equipment uses, current day challengers, requirements and needs.

This report is passed to one of our highly trained and knowledgeable Assessors and a personalised appointment is created for one of our Assessors to meet with the user and/or care teams.

During an appraisal appointment, our Assessor discusses the needs and requirements, has a range of products available for your evaluation and will offer recommendations from these, suggesting those most suited to provide the best result for users and care team.

We are specialists in providing tailored solutions and can adapt most of the equipment we supply to suit the individuals needs required, in fact we love to do this because care equipment is juts not a ‘one size fits all’.

---



## QUOTATION

ambre-stone recognises your time pressures and are committed to provide itemised proposals within 24 hours of the ambreX Assessment completing.

At this stage in your ambreX journey, our internal team will assist to ensure that any VAT exemption requirements and other forms are completed to allow for a quick, timely delivery once your order is placed.

---



## DELIVERY & INSTALLATION

Many of our consumable items are available for delivery within 1-2 days of receiving your order.

Our team of highly experienced technicians are available to install equipment and train key personnel to be able to do the same. We will communicate delivery options for all bespoke products throughout your ambreX journey. This includes arranging a suitable time for our technician to meet on site for product installation set up and training for the user and/or care team, if required.

---



## AFTERCARE

At ambre-stone, aftercare is more than just a word. Having begun your ambreX journey, you immediately enter ongoing support & service for both products and carer team training alike.

Our team of highly experienced engineers will also provide technical support and equipment training; giving you the confidence that those using the equipment, can do efficiently and safely.

To ensure the equipment remains serviceable and in safe working conditions, ambre-stone offer an extensive range of servicing contracts and repair solutions.

**FREE ON-SITE APPRAISALS AND DEMONSTRATIONS**

We work to provide the optimum solution for you, the carer and family.

## TILT-IN SPACE



Manual operation  
Pull lever and tilt chair. The lever has a safety catch which must be released before squeezing the lever.



## ARTICULATING BACK



There are two knobs on the back of the chair which allow the carer to change the angle of the upper part of the backrest to give more head support or allow for a kyphotic curvature of the spine.



## ARM-REST REMOVAL

The arm-rests are removable vertically.



## SEAT WIDTH ADJUSTMENT/ ARM-REST REMOVAL

Arm rests come in different size pairs to achieve different seat widths, 400mm, 450mm and 500mm. To adjust the seat width by removing the arm rest and replacing with a different size, remove the retaining butterfly screws and slide the arm rest off.



## THORACIC WIDTH, ANGLE AND HEIGHT ADJUSTMENT



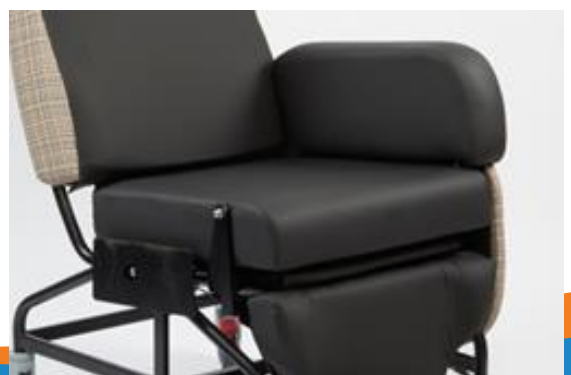
The thoracic supports are locked in place with the large external knob. There are two support tubes.

By loosening the large knob the thoracic support can be positioned wider or at a different angle to suit the client's needs.

## REMOVABLE SEAT CUSHIONS MODULE

The seat module can be removed to allow the addition of other seat foam/gel/air cushion systems.

The cushion casing is secured to the seat with Velcro and can be repositioned giving some depth adjustment.

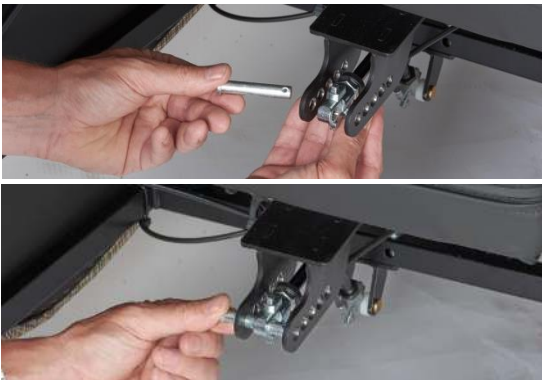


## LEG REST OPERATION

Manual Leg rest operation is a two handed operation. The release trigger must be squeezed as the leg rest is pulled outwards to extend it.



## LEG REST STARTING POSITION

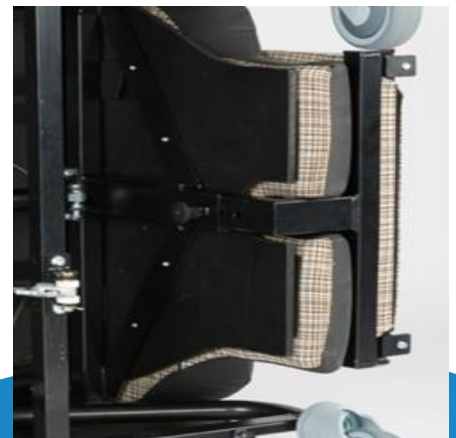


The leg rest gas spring can be positioned at different start points to allow a higher leg rest or a negative angle start. The pin shown in the pictures is easily repositioned.

## FOOTPLATE HEIGHT ADJUSTMENT AND REMOVAL

To adjust the height of the footplate the index plunger pin needs to be pulled out and the footplate can be positioned higher or lower in line with the next set of holes.

Footplate removal requires two hands to pull the index plunger out and then slide the footplate out of the leg rest mechanism.



## FOOTPLATE ANGLE ADJUSTMENT

The angle of the footplate can be adjusted using the chromed dome bolts highlighted. It is possible to adjust the angle from -10 degrees to + 20 degrees



## FOOTPLATE FOLD AWAY



The footplate can be stored in front of the leg rest.

## REAR CASTOR BRAKING

The rear locking castor is locked in the attached photograph. This is easily done with the carer's foot operating the brake lever. It is advisable to lock the castors whenever the client is in the chair in a stationary position.



400

ambre

## SIZE OPTIONS

THREE SEAT WIDTH	16" (400 mm)	18" (460mm)	20" (510mm)
SEAT DEPTH	Adjustable from 17 – 20" (430 - 510mm)		
SEAT HEIGHT TO FOOTPLATE	Adjustable from 14 – 18" (350 – 460 mm)		
BACK HEIGHT	30" (760mm)		
TILT-IN-SPACE RECLINE	40°		

## ALSO AVAILABLE FROM ambre-stone

### ambre 400 CARE CHAIRS

We offer high quality, bespoke seating and wheelchairs providing posture, comfort and pressure management. Along with our appraisal support we ensure the outcome achieved is the optimum solution. We cover the full range of care requirements.



### ambre 400 INDOOR / OUTDOOR CHAIRS

Maximum comfort care chairs with easy transfer/hoist access and easy to clean thanks to their removable and wipe clean/washable covers sets. Excellent solution for children and small adults looking for that extra mobility and inclusion. Medical device classified.



OUR FULL RANGE IS AVAILABLE FOR ON-SITE DEMONSTRATION AS REQUIRED

Contact us on **01522 420091** for more information



ambre 1400

## ASSISTED & ULTRA DEEP BATHS

Specialist bathing products can be of such benefit to those less able and who have difficulty using standard facilities. ambre-stone can provide a range of specialist baths to suit all needs both fixed and Hi-Lo. Sizing options available in all types to ensure suitability for the user and the environment. We offer a unique ultra-deep bath and a range of luxury features can be provided to make for the ultimate therapeutic bathing experience.



ambre 1100/1500

## HOISTS & STAND AIDS

Our patient lifting products are designed to give caregivers the best support and an optimal working environment by reducing the need for heavy manual handling and lifting, meanwhile ensuring the greatest level of safety and comfort for the patient. Delivery, set up and training to demonstrate the correct use of the supplied equipment can be provided.



ambre 600/700/800

## BED/MATTRESSES

Full range of Hi-Lo 4 section profiling care beds and mattresses with an excellent balance between quality, functionality and budget. Sleeping is such a critical part of life for all and having the correct bed/mattresses combination can make such a huge difference to both users and caregivers.

Standard, Low and Bariatric beds with a large range of Static or full Air Alternating Dynamic Hybrid mattresses available medium to very high risk solutions.



ambre 100

## SLINGS

On-site appraisals for Standard slings. Specialists in all Custom sling requirements. Standard slings held in stock.



ambre 500

## SHOWER CHAIRS

Comfort from Pressure Relieving Seating, Support and Accessibility are our priorities when we look at this part of the daily routine to ensure it can be enjoyed to the full. We have a varied range of shower commode chairs and cradles available for demonstration and on-site appraisal, with many features available such as tilt-in space, back angle recline, adjustable-tension back upholstery, flip-up padded armrests, attendant propelled or self-propelled to name but a few.



amber 900

## HUGGA SLEEP SYSTEMS

Our Hugga sleep systems have been carefully designed by leading neuro-physiotherapists- to provide postural support in an easy to use practical format, that can be integrated into your care plan. Research proves that sleep systems reduce tone/tension and prevent or delay contractures and/or structural deformity, help improve respiratory function and avoidance of tissue damage.



FIND OUT MORE AT  
[www.ambrestone.co.uk](http://www.ambrestone.co.uk)



---

ENRICHING LIVES THROUGH MAXIMUM POSTURAL  
SUPPORT AND PRESSURE MANAGEMENT

---

Ambre-stone Ltd  
Fosters Yard  
Station Road  
Langworth  
Lincoln  
LN3 5BD

01522 420091  
[enquiries@ambrestone.co.uk](mailto:enquiries@ambrestone.co.uk)  
[www.ambrestone.co.uk](http://www.ambrestone.co.uk)